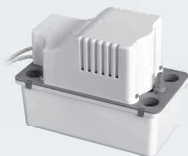




NTH 360 WG6

Acid condensate pump

Into the box



Condensate pump
mm 285 x 140 x H 198
with power and alarm
cables 2 m



Connecting pipe
6 mt x Ø 8 mm



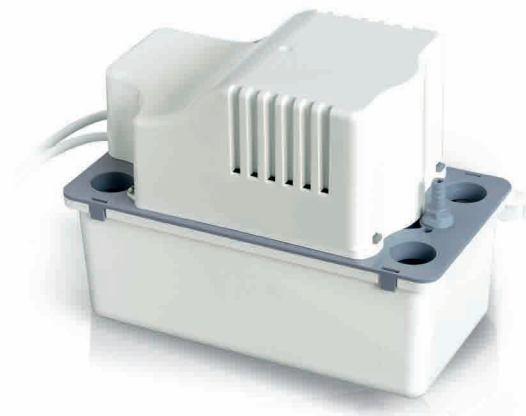
Inlet pipe adapter
pipe Ø 40 mm - Ø 25 mm



Cable tie for the adaptor



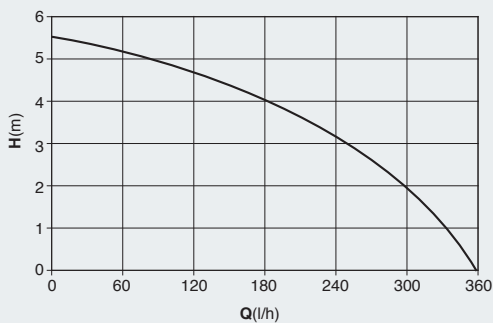
Vibration damper tape
for side or vertical position



Max 287 kW Sound level 44 dBA

The pump is designed and built to recover the condensate coming from air conditioners or boilers. The alarm signal has two contacts NO and NC. The pump's motor works with positive head and is protected by a double lip-seal.

Code	Article	Description
SP04093666	NTH 360 WG6	Condensate pump



Technical data

- Max flow.....360 l/h
- Max head.....5,2 m
- Max head230V - 50Hz
- Max rated current.....0,60 A
- Alarm contactsNC-NA 5A Resistive 250V
- Weight.....2,4 kg
- Tank volume.....2,2 l
- Nonreturn valve included.....Ø8mm
- Power cable with Schuko plug and alarm cable 2m
- Screws, bolts, nutsstainless steel 304
- Motor plate support.....AISI 304
- Acid condensate.....min pH 2,8
- Protection class.....IP20
- Certification.....CE
- RoHS 2 compliant

Example of installation

- 1 - wall-mounted or floor standing boilers
- 2 - cooling system

